

# Creating a Blues Scale Worksheet

Pride of Plymouth Jazz Ensemble

*Bass Clef Version*

Name \_\_\_\_\_

1. Create a major scale (C major is used)



2. Lower the 3rd and 7th scale degrees.



3. Remove the 2nd and 6th scale degrees.



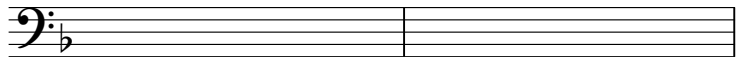
4. Add a raised 4th scale degree after the original 4th scale degree.



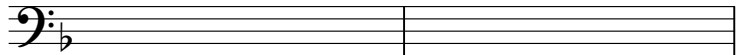
5. Use the F major scale to create the F Blues Scale using the 4 steps listed above.



Lower the 3rd and 7th scale degrees.



Remove the 2nd and 6th scale degrees.



Add a raised 4th scale degree after the original 4th scale degree.

